



ARMADI MONOBLOCCO FIANCHI ASPORTABILI SERIE CX

- Materiale: acciaio inox EN 1.4301 (AISI 304) finemente satinato e protetto, spessore porta 20/10 spessore fasciame e fiancate 15/10
- Porta anteriore, cieca oppure con vetro stratificato 3+3 antifondamento, con cornice interna inox di rinforzo, forata per poter sostenere apparecchiature e o fissare canaline ed accessori.
- A richiesta è possibile effettuare sulla porta cieca finestrate parziali o con materiali diversi (policarbonato oppure alluminio per serigrafie)
- Parte posteriore non accessibile e cielo non asportabile, ricavati da un unico foglio di lamiera
- Fiancate laterali asportabili imbullonate, da ordinare separatamente
- Serratura a doppio pettine con mostrina esterna in poliammide nera caricato vetro, con chiusura in 4 punti con chiave BT. A richiesta può essere sostituita da serrature diverse
- Piastra passacavi con guarnizione a tenuta in un pezzo unico (a richiesta in 3 parti)
- Cerniere interne in acciaio inox AISI 316 che permettono l'apertura della porta a 120°
- Peso max supportabile dalla porta: 30 kg
- Guarnizione di tenuta in poliuretano espanso a stesura robotizzata
- Piastra interna in sendzimir da ordinare separatamente
- Predisposizione per la messa a terra come da normative vigenti.
- Grado di protezione: armadi a porta singola IP66, armadi a porta doppia IP65

SELF-STANDING CABINETS WITH REMOVABLE SIDE PANELS SERIES CX

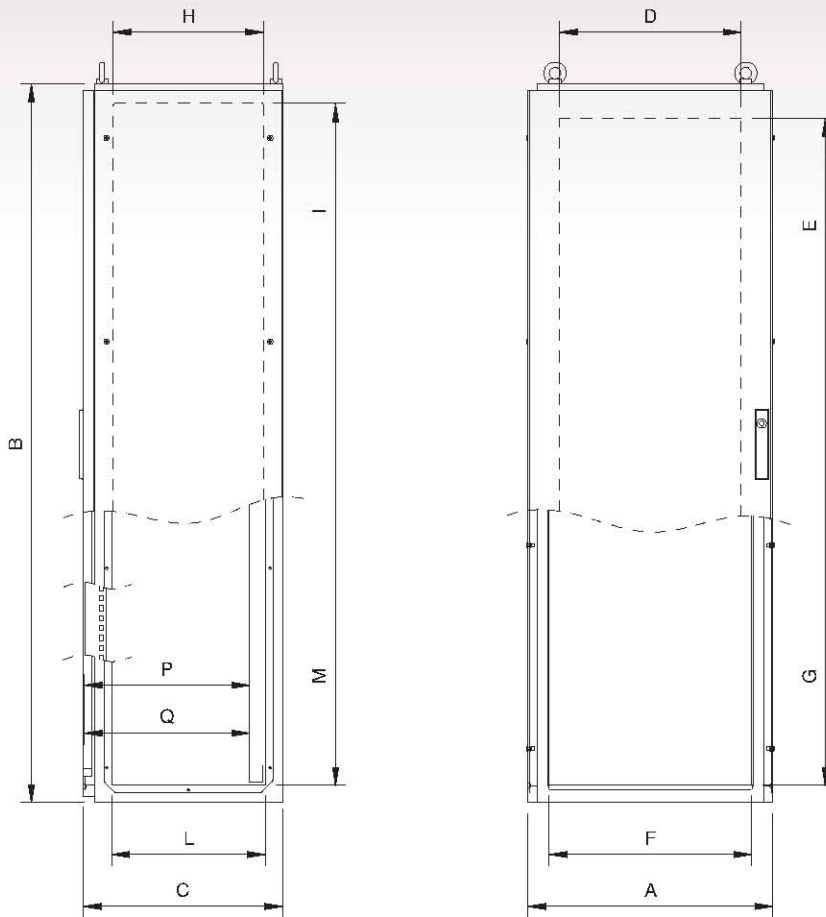
- *Material: s/s EN 1.4301 (AISI 304) finely satin-finished and protected. Thickness: 20/10 for the door and 15/10 for cabinet and side panes*
- *Front door, blind version or with window (layer glass 3+3 crash proof), with drilled stiffening s/s/ frame to support equipment and/or secure cableducts and accessories, On request blind door can also be equipped with partial windows and different materials can be used (polycarbonate or aluminium for silk printing)*
- *No rear access and no removable top panel: top panel and rear part are obtained from a single sheet.*
- *Removable side panes, to be ordered separately*
- *Twin-lock with outside faceplate made of glass-loaded black polyamide, 4 point-closing, and BT key. On request it can be replaced by other types of door locks*
- *One fairlead plate with seal (on demand in 3 parts)*
- *AISI 316 s/s inner hinges, for 120° opening*
- *Max weight that the door can stand: 30 kg*
- *Seal of foamed polyurethane, applied with a robotized system*
- *Inner plate of sendzimir to be ordered separately*
- *Pre-arrangement for earthing in compliance with the applicable laws force*
- *Protection degree: one door cabinets: IP66 two door cabinet IP65*



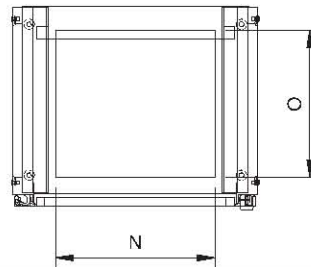
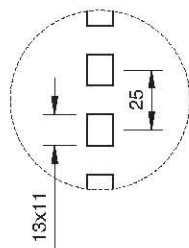
UL US LISTED

IP66
NEMA 4-4X-12

su richiesta
on demand



versione con porta cieca
blind door



ARMADIO/CABINET														OPTIONALS					
dimensioni est. ext dimensions			spazio utile porta door useful size		ingresso frontale front entry		spazio utile fiancata side panel useful size		ingresso laterale lateral entry		ingresso cavi cable entry		*	*	piastra interna mounting plate		fiancate side panels		
ART.	A	B	C	D	E	F	G	H	I	L	M	N	O	P	Q	ART.	X	Y	ART.
CX0685	614	1800	500	455	1630	508	1712	377,5	1704	385,5	1712	400	370	450	415	PI0517	497	1696	CX85
CX0686	614	1800	600	455	1630	508	1712	477,5	1704	485,5	1712	400	470	550	515	PI0517	497	1696	CX86
CX0885	814	1800	500	655	1630	708	1712	377,5	1704	385,5	1712	600	370	450	415	PI0717	697	1696	CX85
CX0886	814	1800	600	655	1630	708	1712	477,5	1704	485,5	1712	600	470	550	515	PI0717	697	1696	CX86
CX1085	1014	1800	500	855	1630	908	1712	377,5	1704	385,5	1712	800	370	450	415	PI0917	897	1696	CX85
CX1086	1014	1800	600	855	1630	908	1712	477,5	1704	485,5	1712	800	470	550	515	PI0917	897	1696	CX86
CX0605	614	2000	500	455	1830	508	1912	377,5	1904	385,5	1912	400	370	450	415	PI0519	497	1896	CX05
CX0606	614	2000	600	455	1830	508	1912	477,5	1904	485,5	1912	400	470	550	515	PI0519	497	1896	CX06
CX0805	814	2000	500	655	1830	708	1912	377,5	1904	385,5	1912	600	370	450	415	PI0719	697	1896	CX05
CX0806	814	2000	600	655	1830	708	1912	477,5	1904	485,5	1912	600	470	550	515	PI0719	697	1896	CX06
CX1005	1014	2000	500	855	1830	908	1912	377,5	1904	385,5	1912	800	370	450	415	PI0919	897	1896	CX05
CX1006	1014	2000	600	855	1830	908	1912	477,5	1904	485,5	1912	800	470	550	515	PI0919	897	1896	CX06

NOTE:

- *P Distanza max tra interno porta e piastra interna in caso di fissaggio con staffe
- *Q Distanza max tra interno porta e piastra interna in caso di fissaggio con guide

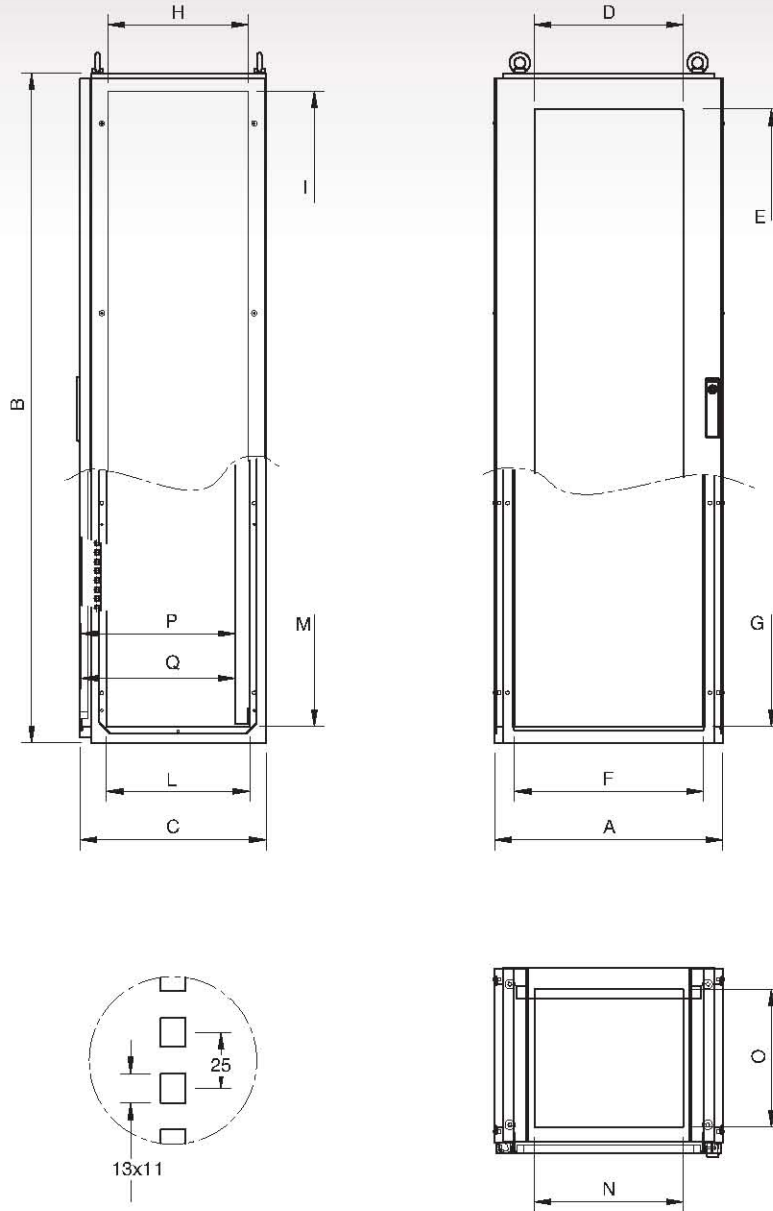
REMARKS:

- *P Max gap between inner part of the door and mounting plate in case of fixing with stirrup of the door
- *Q Max gap between inner part of the door and mounting plate in case of fixing with sliding guides



IP66
NEMA 4-4x-12

su richiesta
on demand



versione con porta vetro
door with window

ilinox srl - Parma, Italia - Tel.: +39 0521 813.629 (r.a.) - Fax: +39 0521 813.570 - sales@ilinox.com - web page: www.ilinox.com

ARMADIO/CABINET														OPTIONALS					
ART/ITEM	A	B	C	parte visibile visible size		ingresso frontale front entry		spazio utile fiancata side panel useful size		ingresso laterale lateral entry		ingresso cavi cable entry		*	*	PIASTRA INTERNA MOUNTING PLATE			FIANCATE SIDE PANELS
				D	E	F	G	H	I	L	M	N	O	P	Q	ART/ITEM	X	Y	ART/ITEM
CXV0685	614	1800	500	400	1600	508	1712	377,5	1704	385,5	1712	400	370	450	415	PI0517	497	1696	CX85
CXV0686	614	1800	600	400	1600	508	1712	477,5	1704	485,5	1712	400	470	550	515	PI0517	497	1696	CX86
CXV0885	814	1800	500	600	1600	708	1712	377,5	1704	385,5	1712	600	370	450	415	PI0717	697	1696	CX85
CXV0886	814	1800	600	600	1600	708	1712	477,5	1704	485,5	1712	600	470	550	515	PI0717	697	1696	CX86
CXV1085	1014	1800	500	800	1600	908	1712	377,5	1704	385,5	1712	800	370	450	415	PI0917	897	1696	CX85
CXV1086	1014	1800	600	800	1600	908	1712	477,5	1704	485,5	1712	800	470	550	515	PI0917	897	1696	CX86
CXV0605	614	2000	500	400	1800	508	1912	377,5	1904	385,5	1912	400	370	450	415	PI0519	497	1896	CX05
CXV0606	614	2000	600	400	1800	508	1912	477,5	1904	485,5	1912	400	470	550	515	PI0519	497	1896	CX06
CXV0805	814	2000	500	600	1800	708	1912	377,5	1904	385,5	1912	600	370	450	415	PI0719	697	1896	CX05
CXV0806	814	2000	600	600	1800	708	1912	477,5	1904	485,5	1912	600	470	550	515	PI0719	697	1896	CX06
CXV1005	1014	2000	500	800	1800	908	1912	377,5	1904	385,5	1912	800	370	450	415	PI0919	897	1896	CX05
CXV1006	1014	2000	600	800	1800	908	1912	477,5	1904	485,5	1912	800	470	550	515	PI0919	897	1896	CX06

NOTE:

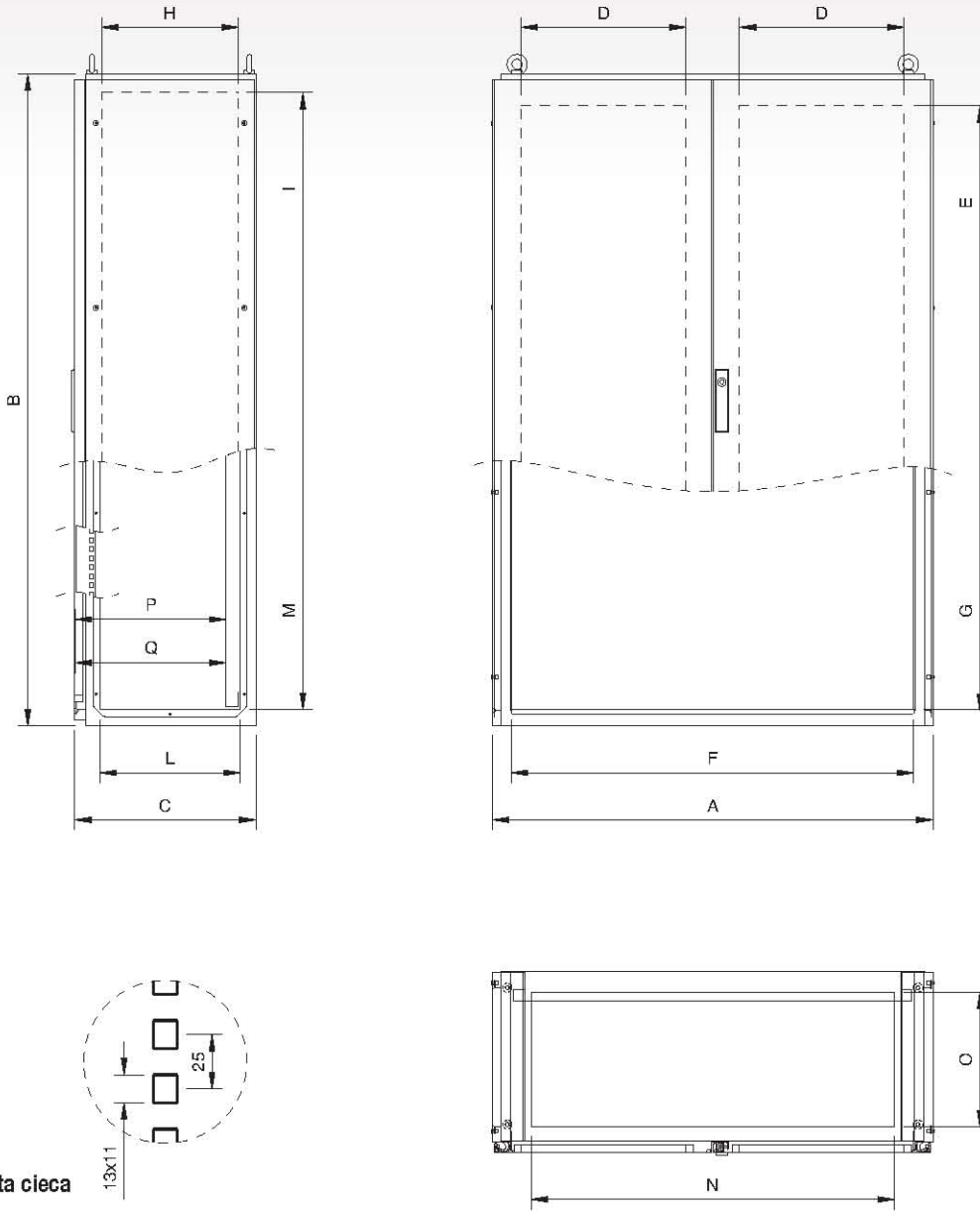
- *P Distanza max tra interno porta e piastra interna in caso di fissaggio con staffe
- *Q Distanza max tra interno porta e piastra interna in caso di fissaggio con guide

REMARKS:

- *P Max gap between inner part of the door and mounting plate in case of fixing with stirrup of the door
- *Q Max gap between inner part of the door and mounting plate in case of fixing with sliding guides



IP65



versione porta cieca
blind door

ARMADIO/CABINET																OPTIONALS			
dimensione est. ext. dimensions			spazio utile porta door useful size		ingresso frontale front entry		spazio utile fiancata side panel useful size		ingresso laterale lateral entry		ingresso cavi cable entry		*	*	piastra interna mounting plate		fiancate side panels		
ART.	A	B	C	D	E	F	G	H	I	L	M	N	O	P	Q	ART.	X	Y	ART.
CX1285	1217	1800	500	455	1630	1111	1712	377,5	1704	385,5	1712	1003	370	450	415	PI1117	1100	1686	CX85
CX1286	1217	1800	600	455	1630	1111	1712	477,5	1704	485,5	1712	1003	470	550	515	PI1117	1100	1686	CX86
CX1205	1217	2000	500	455	1830	1111	1912	377,5	1904	385,5	1912	1003	370	450	415	PI1119	1100	1896	CX05
CX1206	1217	2000	600	455	1830	1111	1912	477,5	1904	485,5	1912	1003	470	550	515	PI1119	1100	1896	CX06

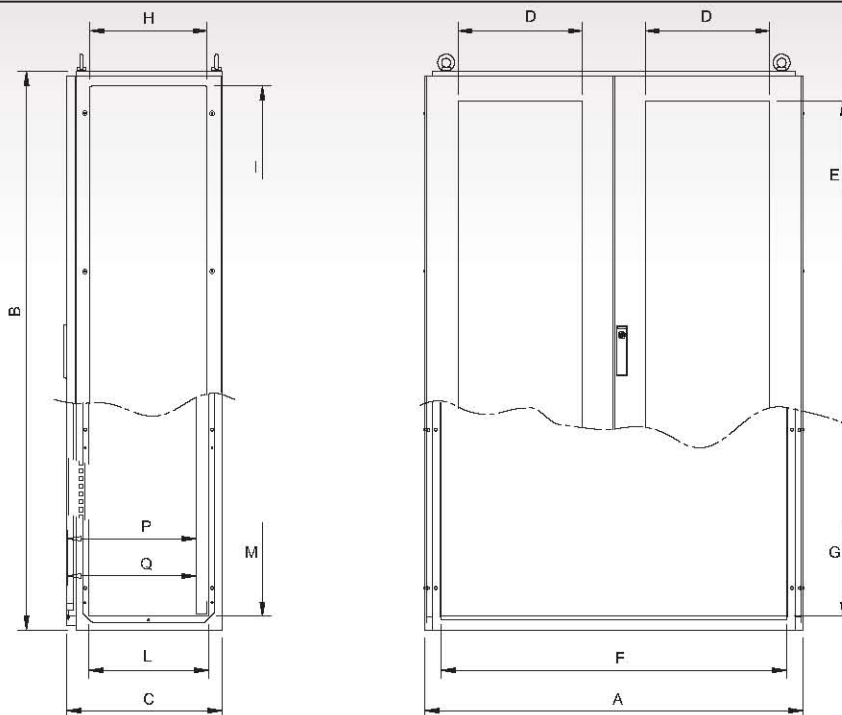
NOTE:

- *P Distanza max tra interno porta e piastra interna in caso di fissaggio con staffe
- *Q Distanza max tra interno porta e piastra interna in caso di fissaggio con guide

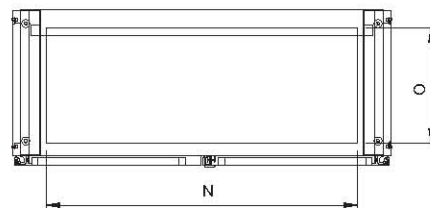
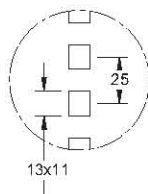
REMARKS:

- *P Max gap between inner part of the door and mounting plate in case of fixing with stirrup of the door
- *Q Max gap between inner part of the door and mounting plate in case of fixing with sliding guides

IP65



versione con porta vetro
door with window



Ilinox srl - Parma, Italia - Tel.: +39 0521.813.629 (r.a.) - Fax: +39 0521.813.570 - sales@ilinox.com - web page: www.ilinox.com

ARMADIO/CABINET														OPTIONALS						
ART/TEM	A	B	C	parte visibile visible size		ingresso frontale front entry		spazio utile fiancata side panel useful size		ingresso laterale lateral entry		ingresso cavi cable entry		*	*	note remark	PIASTRA INTERNA MOUNTING PLATE			FIANCATE SIDE PANELS
ART/TEM	A	B	C	D	E	F	G	H	I	L	M	N	O	P	Q		ART/TEM	X	Y	ART/TEM
CXV1285SX	1217	1800	500	400	1600	1111	1712	377,5	1704	385,5	1712	1003	370	450	415	porta sx con vetro left door with window	PI1117	1100	1696	CX85
CXV1286DX	1217	1800	600	400	1600	1111	1712	477,5	1704	485,5	1712	1003	470	550	515	porta dx con vetro right door with window	PI1117	1100	1696	CX86
CXV1285	1217	1800	500	400	1600	1111	1712	377,5	1704	385,5	1712	1003	370	450	415	due porte con vetro both doors with windows	PI1117	1100	1696	CX85
CXV1286SX	1217	1800	600	400	1600	1111	1712	477,5	1704	485,5	1712	1003	470	550	515	porta sx con vetro left door with window	PI1117	1100	1696	CX86
CXV1285DX	1217	1800	500	400	1600	1111	1712	377,5	1704	385,5	1712	1003	370	450	415	porta dx con vetro right door with window	PI1117	1100	1696	CX85
CXV1286	1217	1800	600	400	1600	1111	1712	477,5	1704	485,5	1712	1003	470	550	515	due porte con vetro both doors with windows	PI1117	1100	1696	CX86
CXV1205SX	1217	2000	500	400	1800	1111	1912	377,5	1904	385,5	1912	1003	370	450	415	porta sx con vetro left door with window	PI1119	1100	1896	CX05
CXV1206DX	1217	2000	600	400	1800	1111	1912	477,5	1904	485,5	1912	1003	470	550	515	porta dx con vetro right door with window	PI1119	1100	1896	CX06
CXV1205	1217	2000	500	400	1800	1111	1912	377,5	1904	385,5	1912	1003	370	450	415	due porte con vetro both doors with windows	PI1119	1100	1896	CX05
CXV1206SX	1217	2000	600	400	1800	1111	1912	477,5	1904	485,5	1912	1003	470	550	515	porta sx con vetro left door with window	PI1119	1100	1896	CX06
CXV1205DX	1217	2000	500	400	1800	1111	1912	377,5	1904	385,5	1912	1003	370	450	415	porta dx con vetro right door with window	PI1119	1100	1896	CX05
CXV1206	1217	2000	600	400	1800	1111	1912	477,5	1904	485,5	1912	1003	470	550	515	due porte con vetro both doors with windows	PI1119	1100	1896	CX06

NOTE:

*P Distanza max tra interno porta e piastra interna in caso di fissaggio con staffe
*Q Distanza max tra interno porta e piastra interna in caso di fissaggio con guide

REMARKS:

*P Max gap between inner part of the door and mounting plate in case of fixing with stirrup of the door
*Q Max gap between inner part of the door and mounting plate in case of fixing with sliding guides